

# Cord Lift 32 RTS

Installation guide

EN

Notice d'installation

FR

Guida all'installazione

IT

Guía de instalación

ES

Guia de instalação

PT

Οδηγός εγκατάστασης

EL

Ref. 5113050A

HOME MOTION by

**somfy**®

# CONTENTS

- 1. Introduction**2
- 2. Safety**2
  - 2.1. Safety and responsibility2
  - 2.2. Specific safety advice3
- 3. Installation** 3
  - 3.1. Motor preparation3
  - 3.2. Tube preparation3
  - 3.3. Motor/tube assembly3
  - 3.4. Mounting the motorized tube on the brackets3
- 4. Wiring**4
- 5. Commissioning** 4
  - 5.1. Programming the RTS transmitter4
  - 5.2. Checking the rotation direction4
  - 5.3. Adjusting the end limits4
  - 5.4. Recording the RTS transmitter5
  - 5.5. Favorite position:  
MY position / Recording MY  
position.5
- 6. Operation**5
  - 6.1. Mode selection: Roller or Tilting  
mode5
  - 6.2. Up, Down, My: In roller mode5
  - 6.3. Up, Down, My: In tilting mode6
- 7. Additional setting**6
  - 7.1. Favorite position: MY position6
  - 7.2. End limit re-adjustement7
  - 7.3. Adjusting the tilting speed7
  - 7.4. Modifying the motor rotation  
direction7
  - 7.5. Modifying the wheel rotation  
direction 8
  - 7.6. Adding/Deleting RTS transmitter 8
  - 7.7. Erasing the transmitters from the  
memory 8
  - 7.8. Erasing the memory of the motor8
- 8. Troubleshooting**9
- 9. Technical data**9

## 1. INTRODUCTION

The Cord lift 32 RTS is a motor specially dedicated to interior applications. The Cord lift 32 RTS can motorize roman, pleated and cellular shades. The Cord lift 32 RTS is a battery operated motor, powered with lithium primary batteries or NiMH batteries with solar pack. The motor can also be powered by a power supply.

Warning : The Cord lift 32 RTS is compatible only with the «Sunis Indoor WireFree RTS» sensor.

Warning : The Cord lift 32 RTS cannot be used with sealed double glazing.

## 2. SAFETY

### 2.1. Safety and responsibility

- This Somfy product must be installed by a professional motorisation and home automation installer, for whom these instructions are intended.
- Before installation, check that this product is compatible with the associated equipment and accessories.
- These instructions describe how to install, commission and use this product.
- Moreover, the installer must comply with current standards and legislation in the country in which the product is being installed, and inform his customers of the operating and maintenance conditions for the product.
- Any use outside the sphere of application specified by Somfy is not approved. Such use, or any failure to comply with the instructions given herein will invalidate the warranty, and Somfy refuses to accept liability.

Subject to technical modifications.

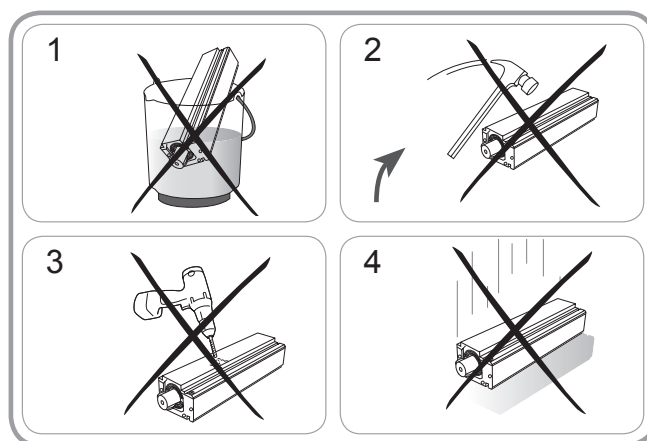
### 2.2. Specific safety advice



In addition to the safety instructions described in this guide, be sure to also observe the instructions set out in the attached document «Safety instructions to follow and keep».

To avoid damaging the product:

- 1) Never immerse it in liquid!
- 2) Avoid impacts!
- 3) Never drill holes in it!
- 4) Do not drop it!

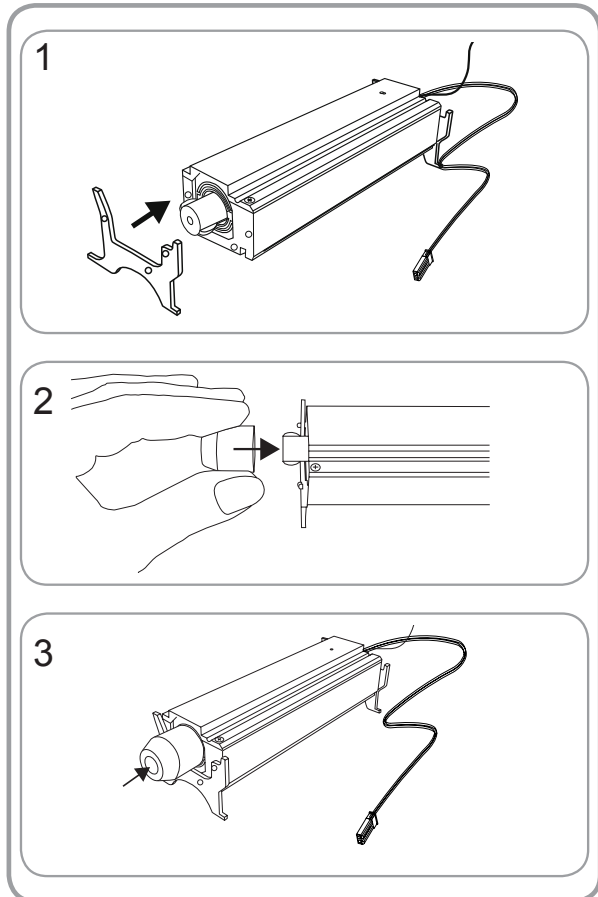


Damaged electric products and batteries should not be disposed of with normal household waste. Make sure to drop them in specially provided containers or at an authorized organization that will ensure they are recycled.

## 3. INSTALLATION

### 3.1. Motor mounting

- 1) If needed, Snap the headrail adapters on the motor.
- 2) Snap the proper shaft adapter on the motor.
- 3) Press the shaft adapter until the drive rod flanges “snap” into the shaft adapter.

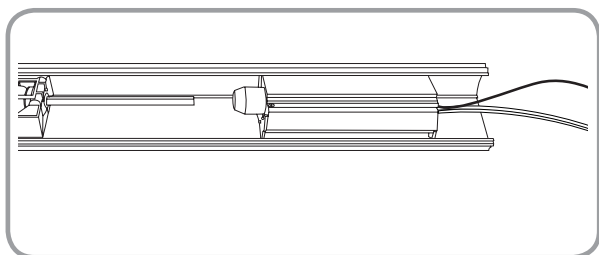


### 3.2. Motor integration inside the headrail

Slide the motor into headrail until the shaft “snap” into the adapter shaft.



For optimal radio reception, the antenna should be kept straight and outside the headrail.

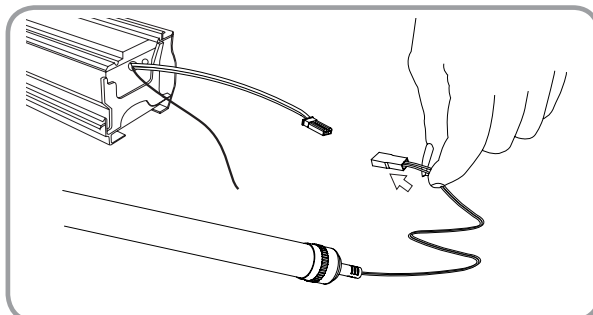


## 4. WIRING

Plug the battery with the motor supply cable.



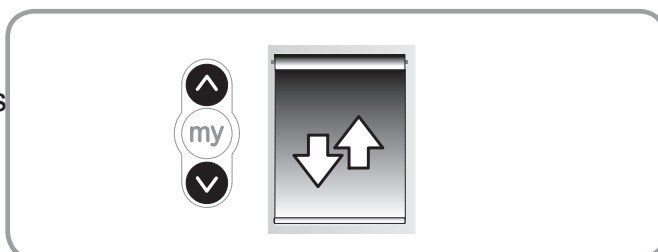
Warning: Do not unplug the battery when the motor works.



## 5. COMMISSIONING

### 5.1. Programming the RTS transmitter

Press the UP and DOWN buttons simultaneously on the RTS transmitter: the shade jogs and the control point is preprogrammed in the motor

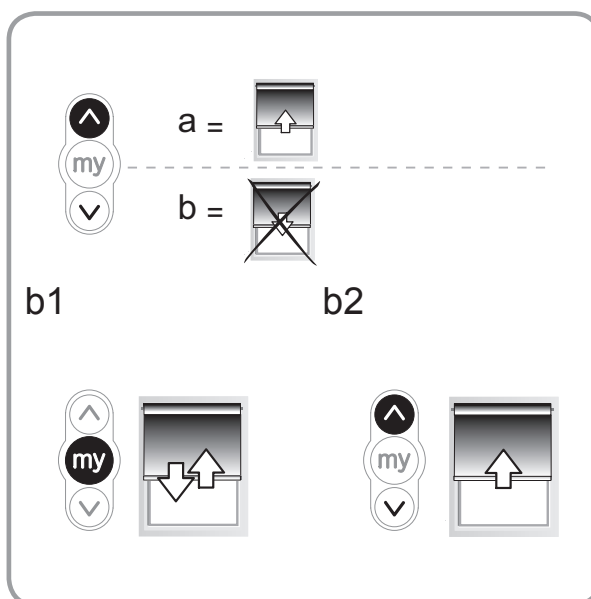


### 5.2. Checking the rotation direction

Press the RTS transmitter UP button:

- a) If the shade raises (a), the rotation direction is correct: move to the section entitled 5.3 «Adjusting the end limits».
- b) If the shade is lowers (b), the rotation direction is incorrect: move to the next step.

- b1) Press the RTS transmitter MY button until the shade jogs: the rotation direction has been modified.
- b2) Press the RTS transmitter UP button to check the rotation direction.



### 5.3. Adjusting the end limits

The end limits can be set in any order.

1) Press and hold the UP button to move the shade to the desired position. If necessary adjust the Up position, using the UP or DOWN buttons.

2) Press the MY and DOWN buttons simultaneously and release them once the shade begins to move.

The up limit is memorized.

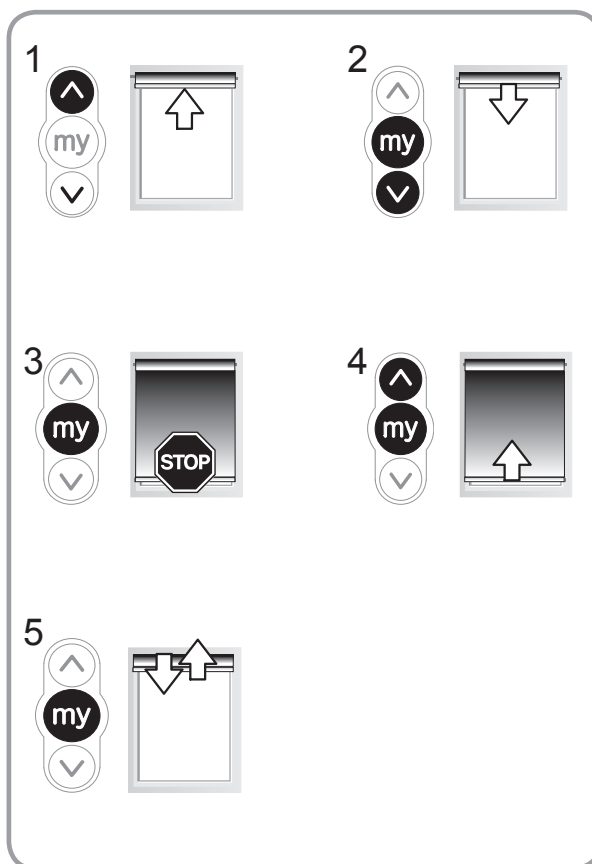
3) Press the MY button when the shade reaches the desired Down position.

If necessary adjust the down position, using the UP or DOWN buttons.

4) Press the MY and UP buttons simultaneously and release them when the shade begins to move.

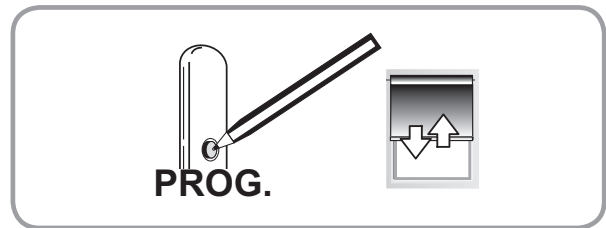
The Down limit is memorized. The shade moves up and will stop at its upper limit.

5) To confirm the end limits, press and hold the MY button until the shade jogs. The end limits are recorded.



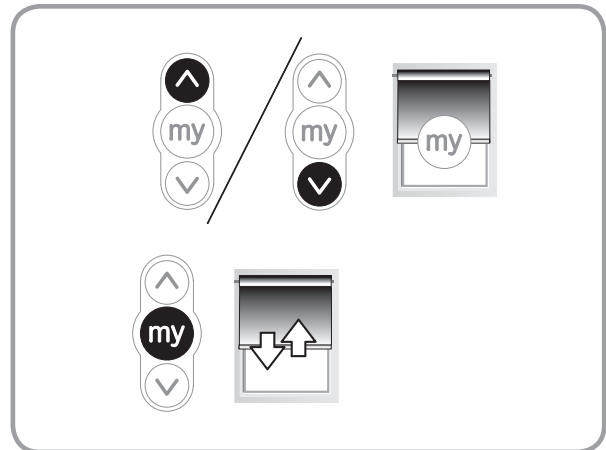
## 5.4. Recording the RTS transmitter

After recording the end limits:  
Briefly press the programming button on the back of the transmitter. The shade jogs.  
The transmitter is recorded.



## 5.5. Favorite position: MY position / Recording MY position

If desired, to set the MY position, move the shade to the desired position with the UP or DOWN button then press the MY button until the shade jogs.



# 6. OPERATION

## 6.1. Mode selection: Roller or Tilting mode

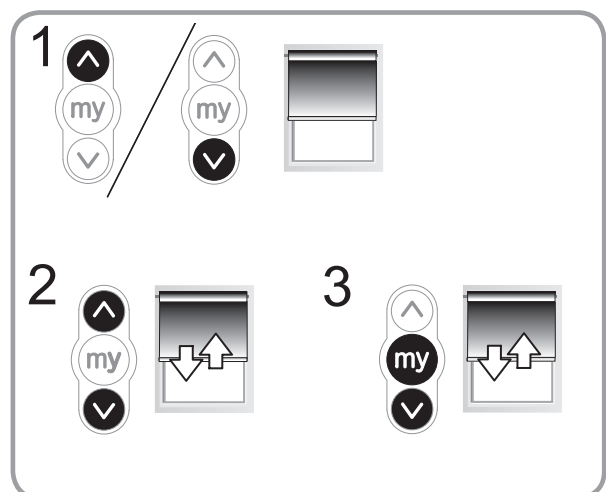
The Cord Lift 32 RTS is designed to work in 2 modes: Tilting mode or Roller mode. This feature allows the Roll Up 28 RTS to be set according to the type of blind you are working with.

The Cord Lift 32 RTS is set by default to work in Roller mode.

1) Move the shade away from the end limits.

2) Simultaneously press the UP and DOWN buttons until the shade jogs.

3) Press and hold the MY and DOWN buttons simultaneously until the shade jogs to change from Roller mode to Tilting mode.

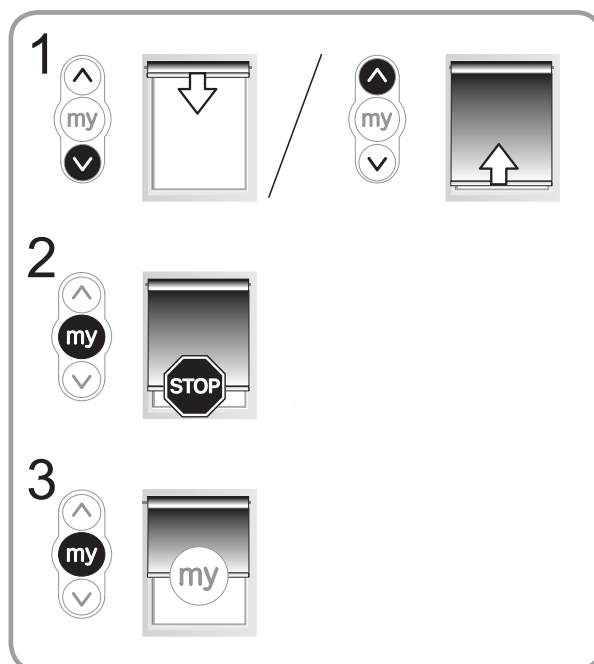


## **6.2. Up, Down, My: In roller mode**

1) To move the shade from a limit to the other limit, press briefly the UP or DOWN button.

2) To stop the shade, press the MY button.

3) If a MY position is recorded, To move the shade to this MY position, press briefly the MY button.



## **6.3. Up, Down, My: In Tilting mode**

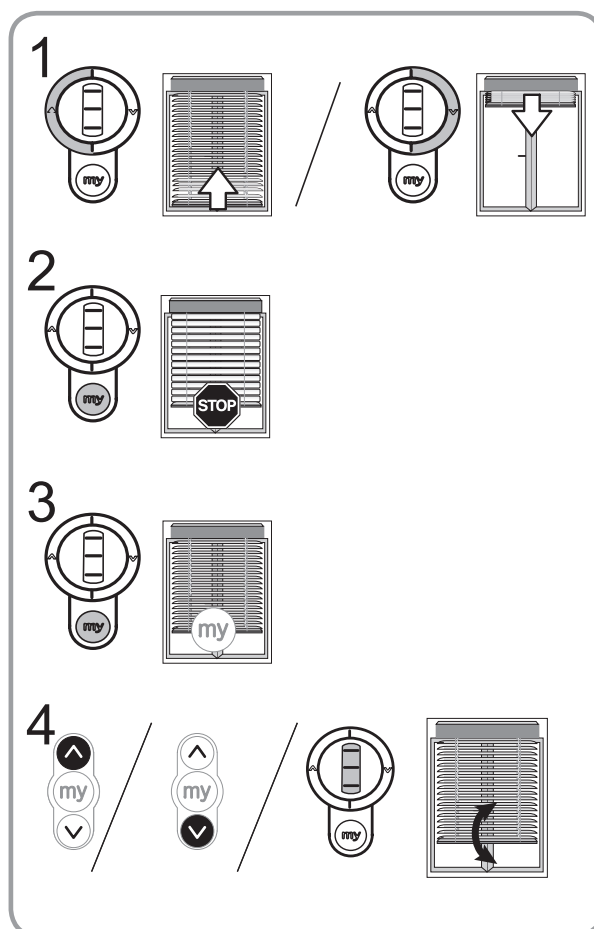
1) To move the shade from a limit to the other limit, briefly press (less than 0,5s) the UP or DOWN button.

2) To stop the shade, press the MY button.

3) If a MY position is recorded, To move the shade to this MY position, press briefly the MY button.

The shade first goes to the down end limit, then to the MY position.

4) To tilt the slats, press and hold the UP or DOWN button or use the scroll of the remote control, until the slats reach the desired position.



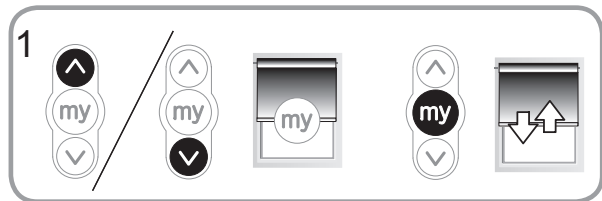


## 7. ADDITIONAL SETTING

### 7.1. Favorite position: MY position

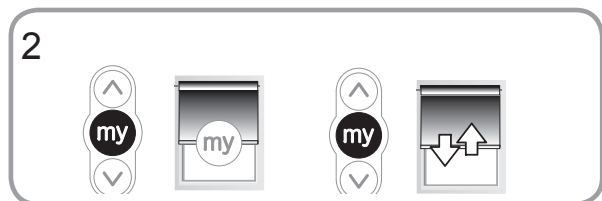
#### 1) Changing the MY position

To change the MY position, go to the new desired MY position with the UP and DOWN buttons then press the MY button until the shade jogs.



#### 2) Deleting the MY position

To delete the MY position, press the MY button to move to this position and press the MY button until the shade jogs.



### 7.2. End limit readjustment

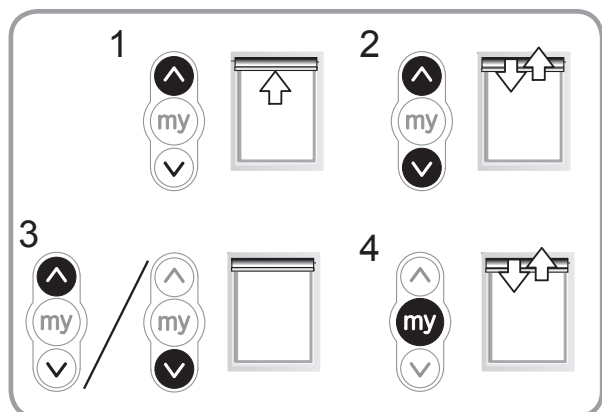
Readjusting the upper end limit

1) Press the UP button, to move the shade to the upper end limit.

2) Press and hold the UP and DOWN buttons simultaneously until the shade jogs.

3) Press and hold the UP or DOWN button to move the shade to the new desired position.

4) To confirm the new limit press and hold the MY button until the shade jogs.



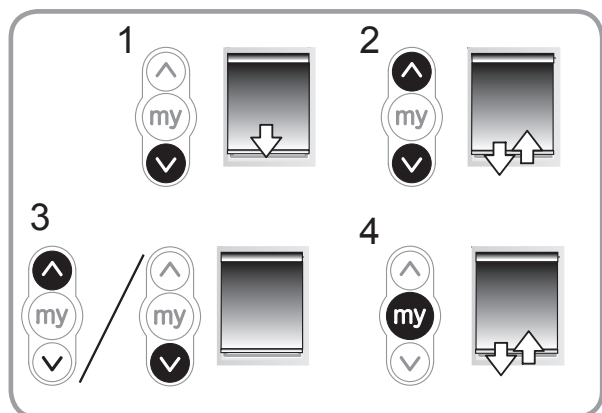
Readjusting the lower end limit

1) Press the DOWN button to move the shade to the lower end limit.

2) Press and hold the UP and DOWN buttons simultaneously until the shade jogs.

3) Press and hold the UP or DOWN button to move the shade to the new desired position.

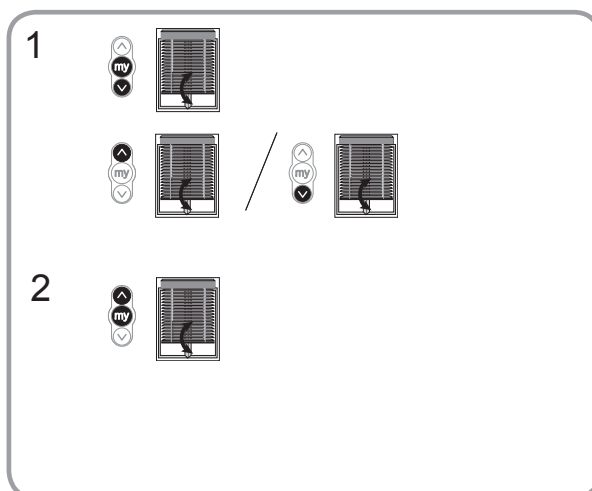
4) To confirm the new limit press and hold the MY button until the shade jogs.



### **7.3. Adjusting the tilting speed**

1) To decrease the tilting speed, press and hold the MY and DOWN buttons simultaneously until the shade jogs. Repeat as needed. If the shade does not jog, then the minimum setting has been reached.

2) To increase the tilting speed, press and hold the STOP and UP buttons simultaneously until the shade jogs. Repeat as needed. If the shade does not jog, then the maximum setting has been reached.



### **7.4. Modifying the motor rotation direction**

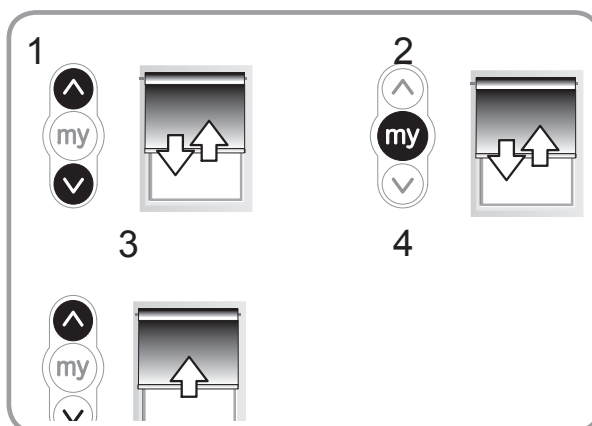
1) Move the shade away from the end limits.

2) Press the UP and DOWN buttons simultaneously until the shade jogs.

3) Press the MY button until the shade jogs to reverse the rotation direction.

4) Press the UP button to check the new rotation direction.

The motor rotation direction is reversed.

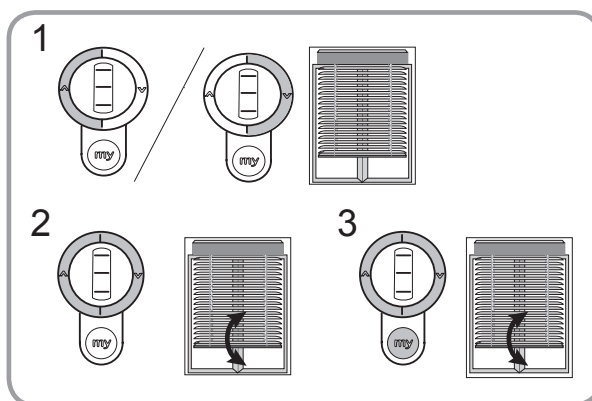


### **7.5. Modifying the wheel rotation direction**

1) Move the shade away from the end limits.

2) Press the UP and DOWN buttons simultaneously, until the shade makes an Up and Down movement.

3) Press the UP, MY and DOWN buttons simultaneously, until the shade jogs, to reverse the wheel rotation direction.

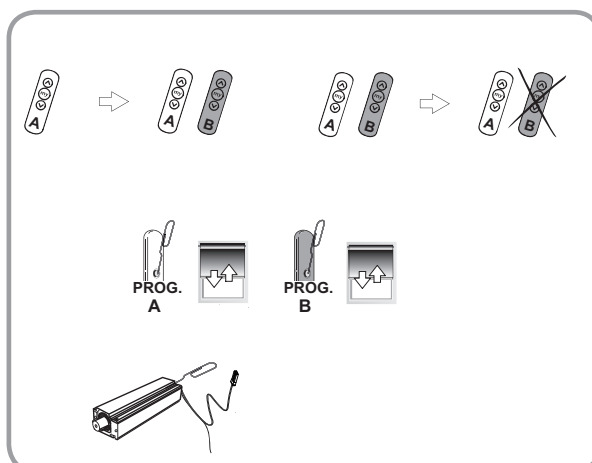


## **7.6. Adding/Deleting RTS transmitter**

Find an RTS transmitter (A) programmed in the motor.

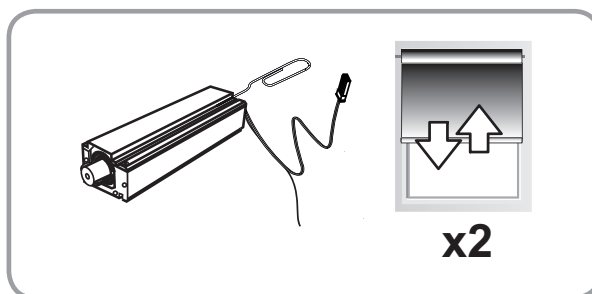
Press and hold the RTS programmed transmitter (A) PROG button or the motor PROG button until the shade jogs: the motor is in programming mode.

Quickly press the RTS transmitter(B) PROG button to add or delete: the shade jogs and the RTS transmitter is programmed or deleted from the motor.



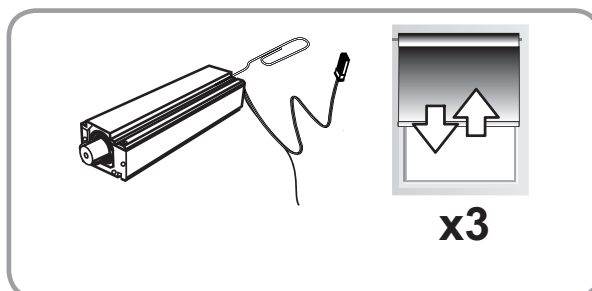
## **7.7. Erasing the transmitters from the memory**

To delete all the programmed transmitters, press and hold the motor PROG button until the shade jogs twice. All the transmitters are deleted.



## **7.8. Erasing the memory of the motor**

To reset the motor, press and hold the PROG button on the motor head until the shade jogs 3 times. All the settings are erased.



## 8. TIPS AND RECOMMENDATIONS

### The motor doesn't work:

#### Verify:

- The wiring of the motor.
- Batteries are not depleted.
- The compatibility of the control.
- The heat generated (wait for the cooling of the motor).
- If using battery tube, make sure the batteries are installed with the correct polarity.

### The equipment stops too soon:

#### Verify:

- The operation of end-limits during the motor rotation.
- The end-limits of the motor are properly adjusted.
- That the shade is within the recommended weight limit.

If the motor stops operating normally, the battery voltage may be too low. Replace batteries.

## 9. TECHNICAL DATA

Power supply	12 Vdc
Radio frequency	433,42 MHz
Torque	0,34 Nm
Up speed	72 rpm
Down speed	90 rpm
Electrical insulation	II
Minimum distance between two end-limit	1 turn
Maximum distance between two end-limit	180 turns
Maximum running time	6 min
Operating temperature	0°C to + 60°C
Protection rating	IP 20 (For indoor use only)
Maximum number of associated control	12