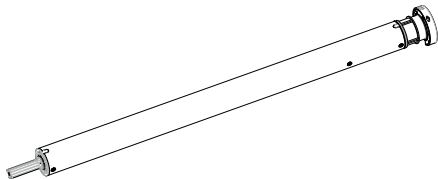




DESIGNED FOR
SILENCE

FAS
floridaautomatedshade.com



Sonesse 30 RTS

EN Instructions

somfy[®]

ORIGINAL INSTRUCTIONS

These instructions apply to all Sonesse 30 RTS drives, the different versions of which are available in the current catalogue.

CONTENTS

1. Prior information.....	5
1.1. Field of application.....	5
1.2. Liability	5
2. Installation.....	6
2.1. Assembly	6
2.2. Compatible power supplies (for US only)	8
2.3. Wiring	9
2.4. Commissioning	10
2.5. Tips and advice on installation.....	12
3. Use and maintenance	18
3.1. Mode selection: Roller or Tilting Mode	18
3.2. Controlling Up, Down, My: in Roller mode	19
3.3. Controlling Up, Down, My: in Tilting mode.....	19
3.4. Favourite position (my)	20
3.5. Sun disappearing position	21
3.6. Sun function.....	22
3.7. Adjusting the speed.....	23
3.8. Tips and advice on operation	24
4. Technical data	26

GENERAL INFORMATION

Safety instructions



DANGER

Indicates a danger which may result in immediate death or serious injury.



WARNING

Indicates a danger which may result in death or serious injury.



PRECAUTION

Indicates a danger which may result in minor or moderate injury.



CAUTION

Indicates a danger which may result in damage to or destruction of the product.

1. PRIOR INFORMATION

1.1. Field of application

The Sonesse 30/24 drives are designed to drive all types of interior blinds and projection screens up to 2 Nm except pantographs.

The installer, who must be a motorisation and home automation professional, must ensure that the motorised product is installed in accordance with the standards in force in the country in which it is installed such as EN 13120 relating to interior blinds.

1.2. Liability

Before installing and using the drive, please read **these instructions carefully**.

In addition to the instructions provided in this guide, please also comply with the instructions provided in the attached **Safety instructions** document.

The drive must be installed by a home motorisation and automation professional, in accordance with Somfy's instructions and the applicable regulations in the country of installation.

Any operation of the drive outside the field of application described above is prohibited. Such use, and any failure to comply with the instructions given in this guide and in the attached **Safety instructions** document, absolves Somfy of any liability and invalidates the warranty.

After installing the drive, the installer must inform his customers of the operating and maintenance conditions for the drive and must provide them with the operating and maintenance instructions, and the attached **Safety instructions** document. Any After-Sales Service operation on the drive must be performed by a home motorisation and automation professional.

Never begin installing without first checking the compatibility of this product with the associated equipment and accessories. If in doubt when installing this product and/or to obtain additional information, contact a Somfy representative or visit the website **www.somfy.com**.

2.INSTALLATION

WARNING

- *These instructions are mandatory for the home motorisation and automation professional installing the drive.*
- *Comply with current standards and legislation in the country of installation.*

CAUTION

- *Never drop, knock or puncture the drive or immerse it in liquid.*
- *Install an individual control point for each drive.*
- *To insure optimized silent operation, the gaps between the drive, the accessories, the tube and the tube end piece must be minimized.*
- *Never cut or remove the cable label.*

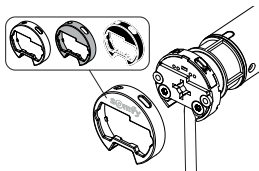
2.1.Assembly

2.1.1.Replace the head cover with a different color (Optional)

NOTICE

Head has interchangeable covers to fit with the fabric.

- 1] Unclip the cover.
- 2] Clip the new cover on the head.

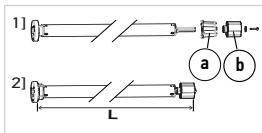


2.1.2.Preparing the drive

CAUTION

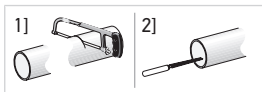
- *Sonesse 30 RTS : interior diameter of the tube has to be $\varnothing 27.7$ mm or greater.*
- *The crown is mandatory.*

- 1] Fit the accessories required to integrate the drive into the tube:
 ⇒ Fit the crown (a) and the wheel (b) to the drive.
- 2] Measure the length (L) between the inner edge of the drive head and the rim of the wheel.



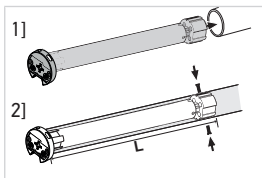
2.1.3. Preparing the tube

- 1] Cut the tube to the required length.
- 2] Deburr the tube and remove the debris.



2.1.4. Assembling the drive-tube

- 1] Slide the drive into the tube. For tubes with a smooth interior, position the cut notch on the crown.
- 2] The wheel must be locked in place to prevent any movement in the tube.



- This can be achieved by fastening the tube to the wheel using self-tapping screws, or steel pop rivets, placed between 5 mm and 15 mm from the outer edge of the wheel, regardless of the tube.
- or by using a wheel lock, for non-smooth tubes.



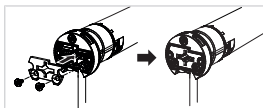
CAUTION

The screws or pop rivets must only be fastened on the wheel and not on the drive.

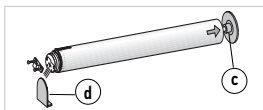
2.1.5. Installing the drive-tube assembly

CAUTION

- *The motorised product must not be compressed between the brackets.*
 - *Do not use the plastic cross without the metal bracket adapter.*
- The drive can be fixed directly onto the drive bracket (the screw holes are spaced 29 mm apart). Use 2 screws (3.5 x 9 mm). A manual tightening torque of 1.5 N m is recommended.
 - Or the drive can be fixed with an integrated drive plate (check in the catalogue to find the reference which fits perfectly with your bracket). Use the 2 screws (3 x 6 mm) delivered with the motor plate. A manual tightening torque of 0,9 N m is recommended. This solution improves the light gap.



- 1] Screw the bracket adapter to the drive head.
- 2] Install and fix the drive-tube assembly onto the end bracket (c) and onto the drive bracket (d).



CAUTION

- *Ensure that the drive-tube assembly is secured onto the end bracket. This operation prevents the tube-drive assembly from coming out of the end bracket attachment.*
- *Light gap reduced: Do not pinch cable or be careful they are not in contact with moving parts.*

2.2. Compatible power supplies (for US only)

References	Designations
1870196	5 motors / Control Distribution panel
1870192	10 motors / Control Distribution panel

References	Designations
1870197	15 motors / Control Distribution panel
1870198	20 motors / Control Distribution panel
1870259	Somfy Power Panel

2.3.Wiring



WARNING

To ensure electrical safety, this Class III drive must be powered by a «SELV» voltage source (Safety Extra Low Voltage).



PRECAUTION

- Cables routed through a metal wall must be protected and insulated by sleeving or sheathing.
- Secure the cables to prevent any contact with moving parts.
- If the drive is used outdoors and if the power supply cable is of the H05-VVF type, run the cable in a UV-resistant duct, e.g. trunking.
- The drive cable cannot be removed. If it is damaged, return the drive to the After-Sales department.



CAUTION

- Leave the drive power supply cable accessible: the product must be easily replaceable.
- Always make a loop in the power supply cable to prevent water from entering the drive.



CAUTION

- The product is intended for being supplied by Class II output of an external power supply.
- Do not use an extension cord. If the power supply cord is too short, have a qualified electrician install an outlet near the motorised product.

Connect the drive to the power supply:

- Black wire: -
- Red wire: +

2.4. Commissioning

NOTICE

- Orange LED blinks continuously in setting mode.
- Green LED blinks once when any order from paired remote is received.

2.4.1. Pre-programming the control point

Press the **Up** and **Down** buttons simultaneously on the control point:

→ The motorised product moves up and down, green LED blinks 5 times and the control point is temporarily programmed.



2.4.2. Checking the direction of rotation

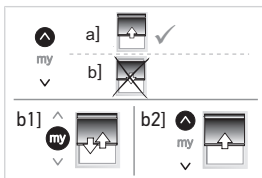
Press the **Up** button on the control point:

a] If the motorised product rises, the direction of rotation is correct: move onto **Setting the end limits** [▶ 10]

b] If the motorised product lowers, the direction of rotation is incorrect: move onto the next step.

b1] Press the **My** button on the control point until the motorised product moves up and down: The direction of rotation has been modified and green LED blinks 5 times.

b2] Press the **Up** button on the control point to confirm the direction of rotation.

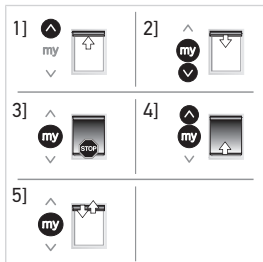


2.4.3. Setting the end limits

NOTICE

The end limits can be set in any order.

- 1] Press and hold the **Up** button to move the motorised product to the desired up position. If necessary, adjust the up position using the **Up** or **Down** buttons.
- 2] **To memorize the up limit:** Press the **My** and **Down** buttons simultaneously and release once the motorised product begins to move. The up limit is now memorized and green LED blinks 5 times.
- 3] Press the **My** button when the motorised product reaches the desired down position. If necessary, adjust the down position using the **Up** or **Down** buttons.
- 4] **To memorize the down limit:** Press the **My** and **Up** buttons simultaneously and release when the motorised product begins to move and green LED blinks 5 times. The down limit is now memorized. The motorised product moves up and will stop at its upper limit.
- 5] **To confirm and complete limit programming:** Press and hold the **My** button until the motorised product briefly moves up and down and green LED blinks 5 times. The end limits are now recorded.



2.4.4. Recording "Pairing" the control point

After recording the end limits:

Briefly press the control point **Prog.** button.

→ The motorised product briefly moves up and down to confirm pairing.

The control point is recorded "paired" to the motorised product and green LED blinks 5 times.



2.5.Tips and advice on installation

2.5.1.Questions about the product?

Observations	Possible causes	Solutions
The motorised product is noisy.	The wheel and the crown are not adapted to the used tube.	Change the wheel and the crown.
	The mechanical plays between drive, accessories, tube and end of tube are too high.	The mechanical plays between drive, accessories, tube and end of tube must be decreased to the minimum.
	The wheel is not properly fixed to the tube.	Fix the wheel properly to the tube.
	The equipment is constrained between the brackets.	Decrease the constraint between the brackets.
	The length of the notch is not adapted to the drive hook or to the used crown.	Adapt the length of the notch to the drive hook or to the used crown.
	Debris, screws or other are in the tube.	Empty the tube.
	The temperature of the environment is not in conformity with the operating temperature.	Change the environment temperature.
The motorised product stops too soon or too late.	The end limits of the motorised product slip.	Re-set the end limits referring to Readjusting the end limits ▶ 14]
	End-limits are not properly adjusted.	Adjust the end-limit referring to Readjusting the end limits ▶ 14]

Observations	Possible causes	Solutions
	The motorised product does not fall within the recommended weight limits.	Check the compatibility of the motorised product. Consult a Somfy contact or visit www.somfy.com .
The motorised product does not work.	Wiring is incorrect.	Check the wiring and modify it if necessary.
	The drive is neither set nor paired. Orange LED lights fixed on.	Proceed to <u>Commissioning [▶ 10]</u>
	The drive is in setting mode. Orange LED blinks.	Proceed to <u>Setting the end limits [▶ 10]</u> . And then proceed to <u>Recording "Pairing" the control point [▶ 11]</u>
	The drive is in thermal protection mode. LED Red = ON then lights OFF.	Wait for the drive to cool down.
	An obstacle hinders the movement of the motorised product. The Red LED lights fixed on.	Remove the obstacle.
	Drive position is out of the end limits. Red LED blinks 2 times intermittently and continually.	Proceed to <u>Setting the end limits [▶ 10]</u>
	The control point battery is low. LED doesn't light when any button of a paired control point is pressed.	Check the battery of the control point and replace it as required.

Observations	Possible causes	Solutions
	The control point is not compatible or not programmed. LED doesn't light when any button of the control point is pressed.	Check the compatibility or pair the control point as required referring to <u>Adding/Deleting Somfy control points</u> [▶ 25]

2.5.2. Readjusting the end limits

⚠ CAUTION

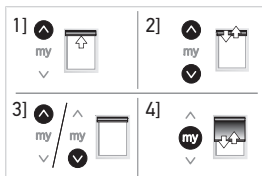
Control point must be paired to the motorised product.

ⓘ NOTICE

Orange LED blinks slowly until the new end limit is recorded.

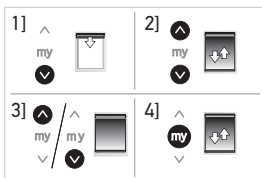
2.5.2.1. Readjusting the upper end limit

- 1] Briefly press the **Up** button, to move the motorised product to the upper end limit.
- 2] Press and hold the **Up** and **Down** buttons simultaneously until the motorised product briefly moves Up and Down.
- 3] Press and hold the **Up** or **Down** button to move the motorised product to the new desired position.
- 4] To confirm the new position press and hold the **My** button until the motorised product briefly moves up and down and green LED blinks 5 times.



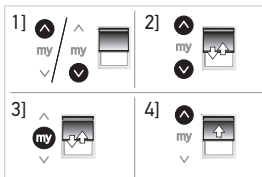
2.5.2.2. Readjusting the lower end limit

- 1] Briefly press the **Down** button to move the motorised product to the lower end limit.
- 2] Press and hold the **Up** and **Down** buttons simultaneously until the motorised product briefly moves up and down.
- 3] Press and hold the **Up** or **Down** button to move the motorised product to the new desired position.
- 4] To confirm the new position press and hold the **My** button until the motorised product moves up and down and green LED blinks 5 times.



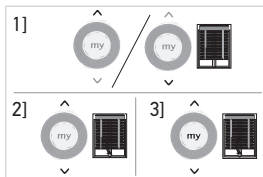
2.5.3. Modifying the drive rotation direction

- 1] Using the **Up** or **Down** button on the control point, move the motorised product away from the end limits.
- 2] Press and hold the **Up** and **Down** buttons simultaneously until the motorised product briefly moves up and down and orange LED starts to blink slowly.
- 3] Press the **My** button until the motorised product briefly moves up and down to reverse the rotation direction and green LED blinks 5 times.
- 4] Press the **Up** button to check the new rotation direction. The drive rotation direction is reversed.



2.5.4. Modifying the wheel rotation direction

- 1] Using the **Up** or **Down** button on the control point, move the motorised product away from the end limits.
- 2] Press and hold the **Up** and **Down** buttons simultaneously until the motorised product briefly moves up and down and orange LED starts to blink slowly.
- 3] Press the **Up**, **My** and **Down** buttons simultaneously, until the motorised product briefly moves up and down, wheel rotation is reversed and green LED blinks 5 times.



2.5.5. Erasing control points from memory

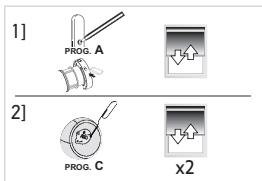
To delete all the programmed control points, press and hold the drive head programming button until the motorised product briefly moves up and down **twice**.



→ All programmed control points are deleted and green LED blinks 5 times.

2.5.6. Erasing sensors from memory

- 1] To delete all the programmed sensors, press and hold the **Prog.** button (A) on the programmed control point or the drive head programming button until the motorised product briefly moves up and down.



⇒ Green LED blinks 5 times then orange LED blinks slowly.

- 2] Press and hold the **Prog.** button (C) on the RTS sensor until the motorised product briefly moves up and down **twice**.

→ All programmed sensors are deleted and green LED blinks 5 times.

2.5.7. Erasing the memory of the drive (factory default)

To reset the drive, press and hold the drive head programming button until the motorised product briefly moves up and down **3 times**.



→ All the settings are erased. Green LED blinks 5 times then orange LED is fixed on.

2.5.8. Temporary sleeping mode

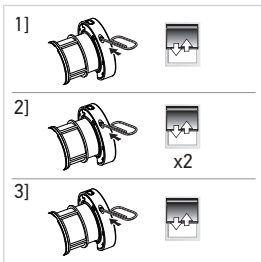
 **CAUTION**

The motorised product must be programmed.

i NOTICE

The drive will not respond to any control points commands for 15 minutes

- 1] Press and hold the drive head programming button until the motorised product briefly moves up and down.
- 2] Briefly press the drive head programming button, the motorised product briefly moves up and down twice.
 - "Sleeping mode" is activated, green LED blinks 5 times to confirm, then orange LED blinks every second as long as the drive is in the temporary sleeping mode.
- 3] To deactivate the "Sleeping mode", briefly press the drive head programming button.
 - The motorised product briefly moves up and down, the control point commands are enabled. Green LED blinks 5 times.



3. USE AND MAINTENANCE

i NOTICE

This drive does not require any maintenance operations.

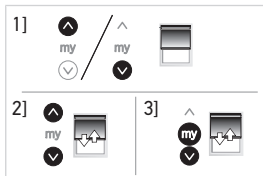
3.1. Mode selection: Roller or Tilting Mode

The drives are designed to work in 2 modes: Tilting mode or Roller mode. This feature allows the drive to be set according to the type of application.

i NOTICE

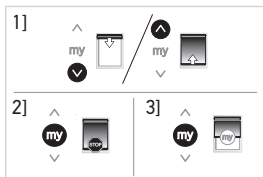
The drive is set (by default) to work in Roller mode.

- 1] Move the motorised product away from the end limits.
- 2] Simultaneously press and hold the **Up** and **Down** buttons until the motorised product briefly moves up and down.
- 3] Press and hold the **My** and **Down** buttons simultaneously until the motorised product briefly moves up and down to change from Roller mode to Tilting mode.
 - Green LED blinks twice to indicate that the drive is in **Roller mode** or three times to indicate that the motor is in **Tilting mode**.



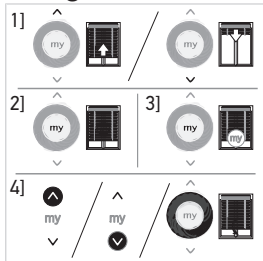
3.2. Controlling Up, Down, My: in Roller mode

- 1] To move the motorised product from a limit to the other limit, briefly press the **Up** or **Down** button.
- 2] To stop the motorised product, briefly press the **My** button.
- 3] (If a My position is recorded) To move the motorised product to the My position, briefly press the **My** button.



3.3. Controlling Up, Down, My: in Tilting mode

- 1] To move the motorised product from a limit to the other limit, briefly press (less than 0,5s) the **Up** or **Down** button.
- 2] To stop the motorised product, press the **My** button.
- 3] (If a My position is recorded) To move the motorised product to the My position, briefly press the **My** button. The



motorised product automatically travels to the down end limit (first) then to the My position.

- 4] To tilt the slats, press and hold the **Up** or **Down** button or use the scroll of the remote control, until the slats reach the desired position.

3.4.Favourite position (my)

① NOTICE

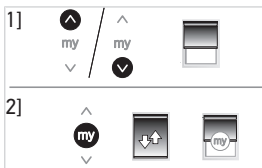
An intermediate position, which is called the "favourite (my) position" and is different from the upper and lower positions, can be programmed.

3.4.1.Programming or modifying the favourite (my) position

① NOTICE

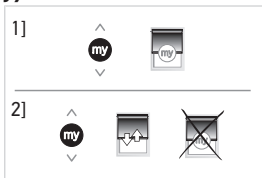
Only one favourite (my) position is permitted.

- 1] Place the motorised product in the desired favourite position (my).
- 2] Press and hold the **my** button until the motorised product briefly moves up and down:
 - The desired favourite position (my) is programmed and green LED blinks 5 times.



3.4.2.Deleting the favourite position (my)

- 1] Press the **my** button:
 - ⇒ The motorised product starts to move and stops in the favourite position (my).
- 2] Press and hold the **my** button until the motorised product briefly moves up and down:



- The favourite position (my) is deleted and green LED blinks 5 times.

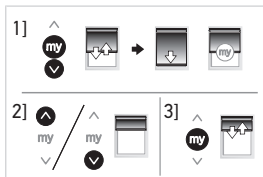
3.5.Sun disappearing position

① NOTICE

This function is available only if a favourite (my) position is programmed.

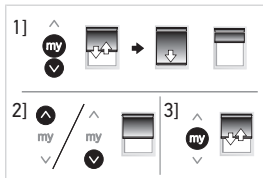
3.5.1.Setting the sun disappearing position

- 1] Press and hold the **My** and **Down** buttons until the motorised product moves.
 - ⇒ The motorised product moves to the lower end limit and returns to the My position.
- 2] Move the motorised product to the desired sun disappearing position using the **Up** and **Down** buttons.
- 3] Press and hold the **My** button until the motorised product moves up and down.
 - The sun disappearing position is set.



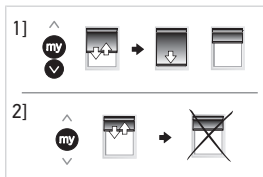
3.5.2.Modifying the sun disappearing position

- 1] Press and hold the **My** and **Down** buttons until the motorised product moves.
 - ⇒ The motorised product moves to the lower end limit and returns to the sun disappearing position.
- 2] Move the motorised product to the NEW desired sun disappearing position using the **Up** and **Down** buttons.
- 3] Press and hold the **My** button until the motorised product moves up and down.
 - The new sun disappearing position is programmed.



3.5.3. Deleting the sun disappearing position

- 1] Press and hold the **My** and **Down** buttons until the motorised product moves.
 - ⇒ The motorised product moves to the lower end limit and returns to the sun disappearing position.
- 2] Press and hold the **My** button until the motorised product moves up and down.
 - The sun disappearing position is deleted.



3.6. Sun function

i NOTICE

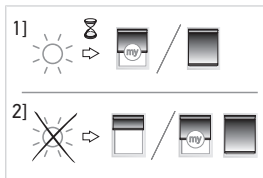
This function is available only with a control point that can activate/deactivate the sun protection automatism.

By default, the sun function is not active.

To activate/deactivate the Sun function:

Refer to the corresponding control point instructions.

- 1] When the sunlight level exceeds the threshold set on the sun sensor:
 - ⇒ A Down order is sent to the motorised product after 2 min.
 - ⇒ The motorised product moves to the My position or to its lower end limit if no MY position has been memorized.
- 2] When the sunlight level falls below the threshold set on the sun sensor:



- ⇒ The motorised product moves to the sun disappearing position or stays at its position (My or lower end limit) if no sun disappearing position has been memorized.

NOTICE

The Wind function is not compatible with this drive.

3.7. Adjusting the speed

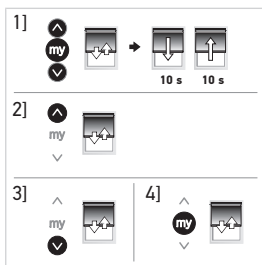
NOTICE

Orange LED blinks slowly in this mode.

- 1] Move the motorised product away from the end limits. Press and hold the **Up**, **My** and **Down** buttons simultaneously, until the motorised product briefly moves up and down once.

- ⇒ The motorised product moves up and down automatically between limits to validate entering in speed adjustment mode.

- 2] To increase the speed, press and hold the **Up** button until the motorised product briefly moves up and down and green LED blinks 5 times. Repeat as needed.



NOTICE

Maximum speed is reached when the motorised product moves briefly 3 times in one direction and 3 times in the other direction. Red LED blinks 3 times and 3 times intermittently.

- 3] To decrease the speed, press and hold the **Down** button until the motorised product briefly moves up and down. Repeat as needed.

① **NOTICE**

Minimum speed is reached when the motorised product moves briefly 3 times in one direction and 3 times in the other direction. Red LED blinks 3 times and 3 times intermittently.

- 4] To confirm the new speed, press and hold the **My** button until the motorised product briefly moves up and down and green LED blinks 5 times.

3.8. Tips and advice on operation

3.8.1. Questions about the product?

Observations	Possible causes	Solutions
The motorised product does not operate.	The control point battery is low.	Change control point battery as required.
	Thermal protection of the drive is on.	Wait for the drive to cool down.
The motorised product does not react when the sun appears/disappears.	The sun function is not activated on the remote control.	Activate the sun function on the remote control referring to Sun function [▶ 22].
	The sun disappearing position is not set.	Set the sun disappearing position referring to Sun disappearing position [▶ 21].

① **NOTICE**

If the motorised product still does not work, contact a drive and home automation professional.

3.8.2. Adding/Deleting Somfy control points

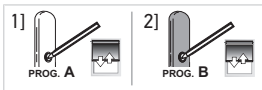
① NOTICE

Orange LED blinks slowly when adding or deleting a remote control.



3.8.2.1. Using a control point already programmed to the motorised product

- 1] Press and hold the **Prog.** button (A) on the programmed control point until the motorised product briefly moves up and down.



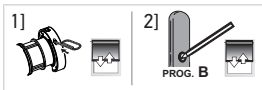
⇒ Green LED blinks 5 times then orange LED blinks slowly.

- 2] Briefly press the **Prog.** button (B) on the control point to add or delete.

→ Green LED blinks 5 times.

3.8.2.2. Using the Programming button on the drive head

- 1] Press and hold the drive head programming button until the motorised product briefly moves up and down.



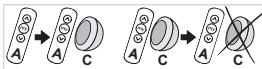
- 2] Briefly press the **Prog.** button (B) on the control point to add or delete.

→ Green LED blinks 5 times.

3.8.3. Adding/Deleting RTS sensors

① NOTICE

Orange LED blinks slowly when adding or deleting an RTS sensor.



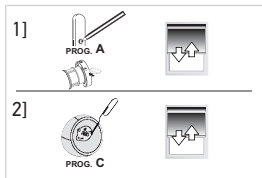
- 1] Press and hold the **Prog.** button (A) on the programmed control point or the drive head programming button until the motorised product briefly moves up and down.

⇒ Green LED blinks 5 times then orange LED blinks slowly.

- 2] Briefly press the **Prog.** button (C) on the RTS sensor to add or delete.

⇒ The motorised product briefly moves up and down.

⇒ Green LED blinks 5 times.



4. TECHNICAL DATA

Frequency bands and maximum power used	433.050 MHz - 434.790 MHz e.r.p. <10 mW
Power supply	24 V
Operating temperature	0°C - +60°C
Operating time	6 min
Input current	0.7 A
Index protection rating	IP30 (For indoor use only)
Safety level	Class III
Torque	2 N·m
Adjustable speed	6 - 28 rpm
Roller speed (by default)	25 rpm
Maximum number of associated controls	12

 **NOTICE**

For additional information on the technical data for this drive contact your Somfy representative.



Please separate storage cells and batteries from other types of waste and recycle them via the local collection facility.



We care about our environment. Do not dispose of the appliance with usual household waste. Give it to an approved collection point for recycling.



SOMFY ACTIVITES SA, F-74300 CLUSES as manufacturer hereby declares that the drive covered by these instructions and used as intended according to these instructions is in compliance with the essential requirements of the applicable European Directives and in particular of the Machinery Directive 2006/42/EC, and the Radio Directive 2014/53/EU.

The full text of the EU declaration of conformity is available at www.somfy.com/ce.

Philippe Geoffroy, Approval manager, acting on behalf of Activity director, Cluses, 12/2020.

US Patents 6979962, 7852765, 7860481, patent pending.

SOMFY ACTIVITES SA

50 avenue du Nouveau Monde

F-74300 CLUSES

www.somfy.com

somfy®



5155873A

